



ООО «Полимер Экспорт»

ПРОМЫШЛЕННЫЕ ЛАКОКРАСОЧНЫЕ ПОКРЫТИЯ

8 (4932)773-503



raum-profile.ru
inmarketing@gk-rp.ru



Release date: 1.10.2024
Manufacturer: Russian Federation
ТУ 20.30.12-001-69372620-2020

Protective Hydrofuge SCREEN-adhesive

CERTIFICATE

State Registration Certificate № RU.01.PA.02.008.E.000069.01.21 from 28.01.2021.
Materials Safety Data Sheet № 69372620-20.30-2017 from 22.01.2021.

DESCRIPTION

Protective hydrofuge SCREEN-adhesive «RAUM-PROFIE»- single component adhesive based on silicone-oxygen polymers, solidified at room temperature by air humidity action.

FIELDS OF APPLICATION

SCREEN-adhesive is used in industrial and civil facilities: Russian Railways and road network objects, to protect the surface from intentional contamination, posting ads and unauthorized "graffiti". SCREEN-adhesion is applied to mineral building materials (concrete, brick, lime sandstone, natural and artificial stone, plaster), wood and metal surfaces. SCREEN-adhesive is also applied to some plastic surfaces (polycarbonate, PVC film, etc.). In some cases, when applied to polymer materials, it should be used with **primer BETPLY- adhesive "RAUM-PROFIE"**.

SUBSTRATE

Protective hydrofuge SCREEN-adhesive is intended to obtain a durable coating with "Anti-graffiti" or "Anti-glue" properties. The adhesive film reduces dirt adhesion, simplifies painted surface cleaning, prevents ads adhesion to the surface. "Graffiti" drawings are removed manually or using the KERCHER unit. Pasted ads, due to the lack of treated surface adhesion, are removed manually without traces and unnecessary effort. The painted surface has oil- and water-repellent properties.

The protective hydrofuge SCREEN adhesive "RAUM-PROFIE" has high adhesion to any surfaces, including painted ones (except for coatings painted with acrylic materials, as well as surfaces produced by powder coating). The coating based on polysiloxanes are rain, sun and high temperature resistant as well as coating does not reduce the vapor permeability of the previous layer. The coating can withstand at least 15 cycles of water cleaning under pressure without damaging the film using soft sponges and rags. Attention! To use abrasive cleaning agents, as well as metal brushes, scrapers and other equipment damaging coating integrity is not allowed!

In compliance with the rules of painting work, the coating service life is at least 15 years if no mechanical impact. It is allowed to apply the SCREEN-adhesive at the temperature up to -10°C.

Attention: coating at sub-zero temperatures can reduce the number of cleaning cycles in some cases.

TECHNICAL DATA

Colour	After drying, the composition forms a homogeneous, colorless surface without foreign inclusions
Mass fraction of dry residue, no less	43%
Dry volume residue no less	39%
Interlayer drying,	30 min
Dry through at (20±2)°C, no more	24 hours
Readiness for operation	7 days
Composition density	0,94-0,98 g/cm ³
Mandrel bend, no more	1 mm
Recommended film thickness	From 50 to 200 microns
Estimated consumption at film thickness 90-100 microns	170-240 g/cm

INSTRUCTION FOR USE

Priming surface to use SCREEN-adhesive must be clean and free from dust and grease. The surface can be cleaned with brush and scour. When using the solvent as a degreaser, the type of substrate is taken into account.

Some types of substrates operating features:

Cellular polycarbonate: the surface must be cleaned of dust and dirt, the presence of cracks and chips is unacceptable, to apply the composition to previously used material is not allowed because its physical and mechanical characteristics are degraded with time.





Some types of polycarbonate may require BETPLY primer use.

Porcelain stoneware: the surface must be cleaned of dust and dirt.

Metal surfaces: the surface should be cleaned of dust and dirt, if necessary, degreased, black metal should preferably be primed.

PVC film: the surface must be cleaned of dust and dirt, in some cases, for improvement, it is possible to use a primer BETPLY-adhesive.

Plaster: the surface must be cleaned of dust and dirt.

Due to the wide range in color and / or gloss, this description is informative.

Certificate of quality is the document confirming the quality of each production lot .

CONDITIONS

Optimal ambient temperature 10°C + 25°C.
Air humidity 65-85%.

To achieve higher decorative properties, dilution of up to 20% with TINNER-composition is allowed.
SCREEN-adhesive application is allowed to be used up to -10°C.

Attention: coating at sub-zero temperatures can reduce the number of cleaning cycles in some cases.

APPLICATION

Preparing	Mix thoroughly
Air-free spraying	SCREEN-adhesion high viscosity allows to make coating in one layer Operation viscosity: 100 -120 s Nozzle diameter: 0,011"-0,017" Initial pressure: 150-200 atm
Air spraying	Operation viscosity: 60 - 80 s Nozzle diameter: 1,8 – 2,5 Initial pressure: 2-4 atm
Brush	Recommended to use only on small areas.
Roller	Recommended to use only on small areas.
Thinner	TINNER-adhesion
Cleaner	Formula thinner RP-1K, RP-1KF, thinners of type P4, P5.
Cleaning	After painting, the spray equipment must be immediately washed with a solvent to prevent the material from curing and forming an extremely strong film.

PACKAGE SIZE

0,1 kg (aerosol can 0,52 l);
0,9 kg (metal can 1 l)
2,7 kg (metal can 3 l);
4,5 kg (metal can 5 l);
18 kg (metal eurobucket 21 l).

STORAGE

Store in a tightly closed container in a closed dry room at a temperature from - 40 ° C to + 40 ° C, away from sources of ignition, protecting from mechanical damage, direct sunlight and moisture.
Make full use of opened package. All the remaining material is solidified with air access, which leads to viscosity increase and surface peel ply appearance.

GUARANTEED STORAGE LIFE

The warranty period of SCREEN-adhesive is 12 months from the date of manufacture, subject to the consumer's compliance with the rules of transportation and storage. The warranty period of SCREEN-adhesive in aerosol can is 3 months from the date of manufacture, subject to the consumer's compliance with the rules of transportation and storage. After the expiration of the warranty period of storage, it is not recommended to use materials without laboratory testing.

HEALTH AND SAFETY

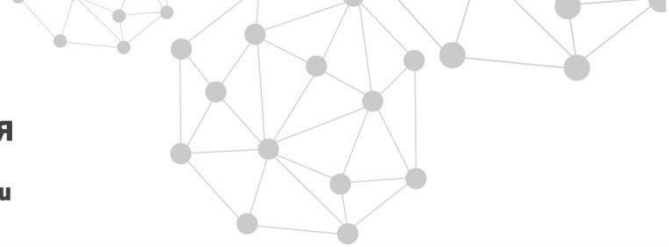
When painting work, use personal protective equipment (respirators, gloves, glasses, etc.). Work inside the room should be carried out with artificial (local, general) or natural ventilation. Use the SCREEN adhesive only in places without sources of open fire and ignition. Avoid contact with skin or eyes. In case of skin contact immediately wipe with a rag or cotton swab, rinse thoroughly with soapy water, do not use solvents. In case of eyes contact rinse with clean water for at least 10 minutes, consult a doctor. In case of ingestion, consult a doctor.



ООО «Полимер Экспорт»
ПРОМЫШЛЕННЫЕ ЛАКОКРАСОЧНЫЕ ПОКРЫТИЯ

8 (4932)773-503

raum-profile.ru
inmarketing@gk-rp.ru



RECYCLING

Packing materials are recycled as consumer waste.

Further Information.

The recommendations above are based on our own research and our best knowledge but don't fully guarantee any particular case as it depends on the quality, friability and porosity of the base. The local working conditions and methods may vary and are beyond our control. Therefore we cannot be held responsible for the actual work on the site. The information is currently updating.



Собственное
современное
производство



Система
Менеджмента
Качества
(ISO 9001)



Аттестованная
лаборатория



На рынке
с 2002 года